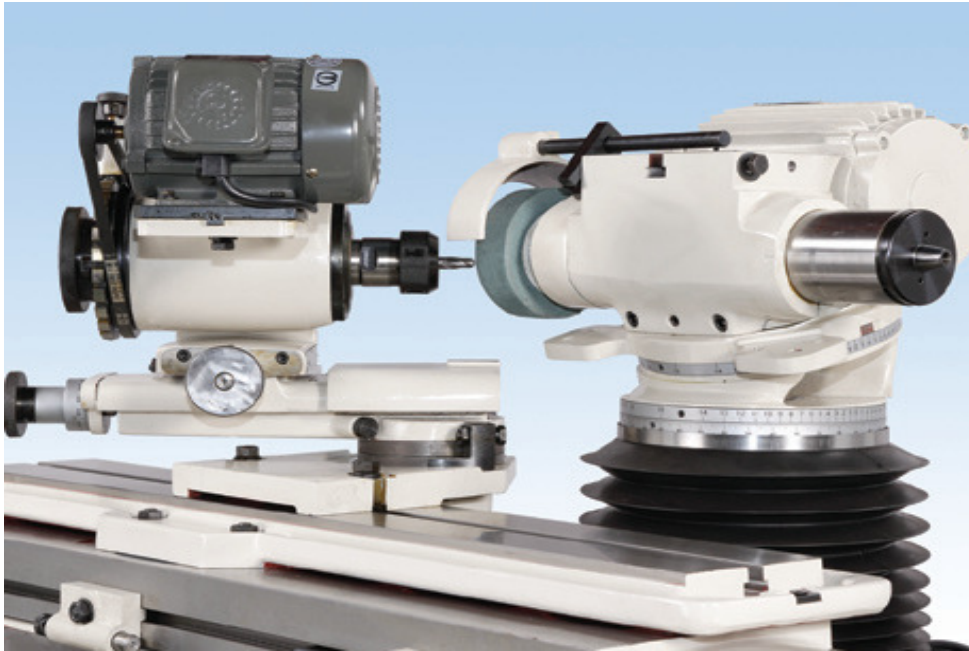


## 8.2 Circular Arc No. 1



### 1. Products:

This is the repair rounding end mills and various arcs, the device has two slides, can be through precise scale ring to be adjusted, the work head Spindles is also a M.T.#5 or B&S#12 two kinds of hole , also at work after the first installation of indexing plate mounting surface, as the straight slot cutters indexing purposes.

### 2. Product Specifications

Grinding radius	0 - 50 mm (0 - 2 in)
Maximum diameter (To worktable)	190 mm (7 - 7/16 in)
Max.grinding radius (To worktable)	45 mm (1 - 3/4 in)
<b>Total stroke horizontal Spindles</b>	
A Type	50 - 175 mm (2 - 6 - 7/8 in)
B Type	105 - 230 mm (4 - 1/8 - 9 in)
Lateral rotation of the deviation	0 - 50 mm (0 - 2 in)
Horizontal rotation angle of Spindles	90°
Vertical Spindles rotation angle	±15°
Spindle taper	B & S 12 (or M.T.5)
Index plate (standard)	24 slots
<b>Spindle drive</b>	
Spindle speed	450 rpm
Motor	65W(1/12HP) 4 pole

### 3. Installation

(a) The Circular arc No. 1 placed bed table.



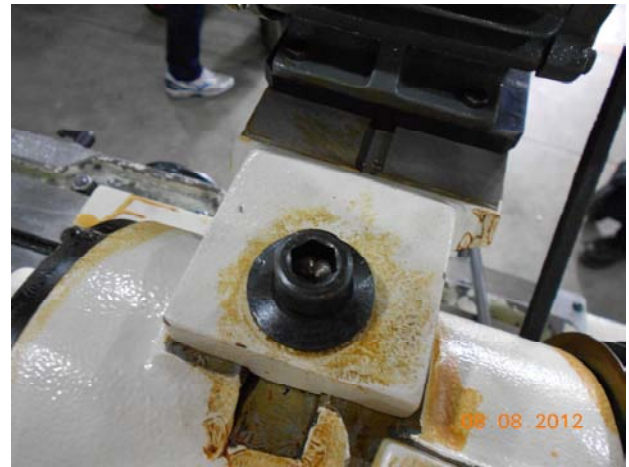
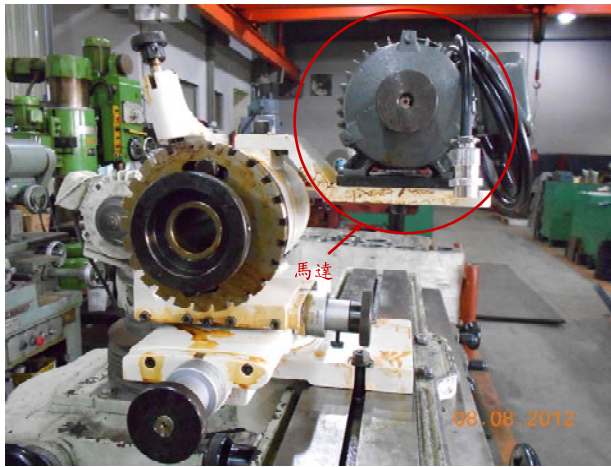
(b) Then the T-screw into the M-40 T-slot worktable.



(c) Tighten the screws on both sides of T-type.



(d) Install and tighten of the motor.



(e) Removing the indexing plate retention mechanism and mounted on a leash.



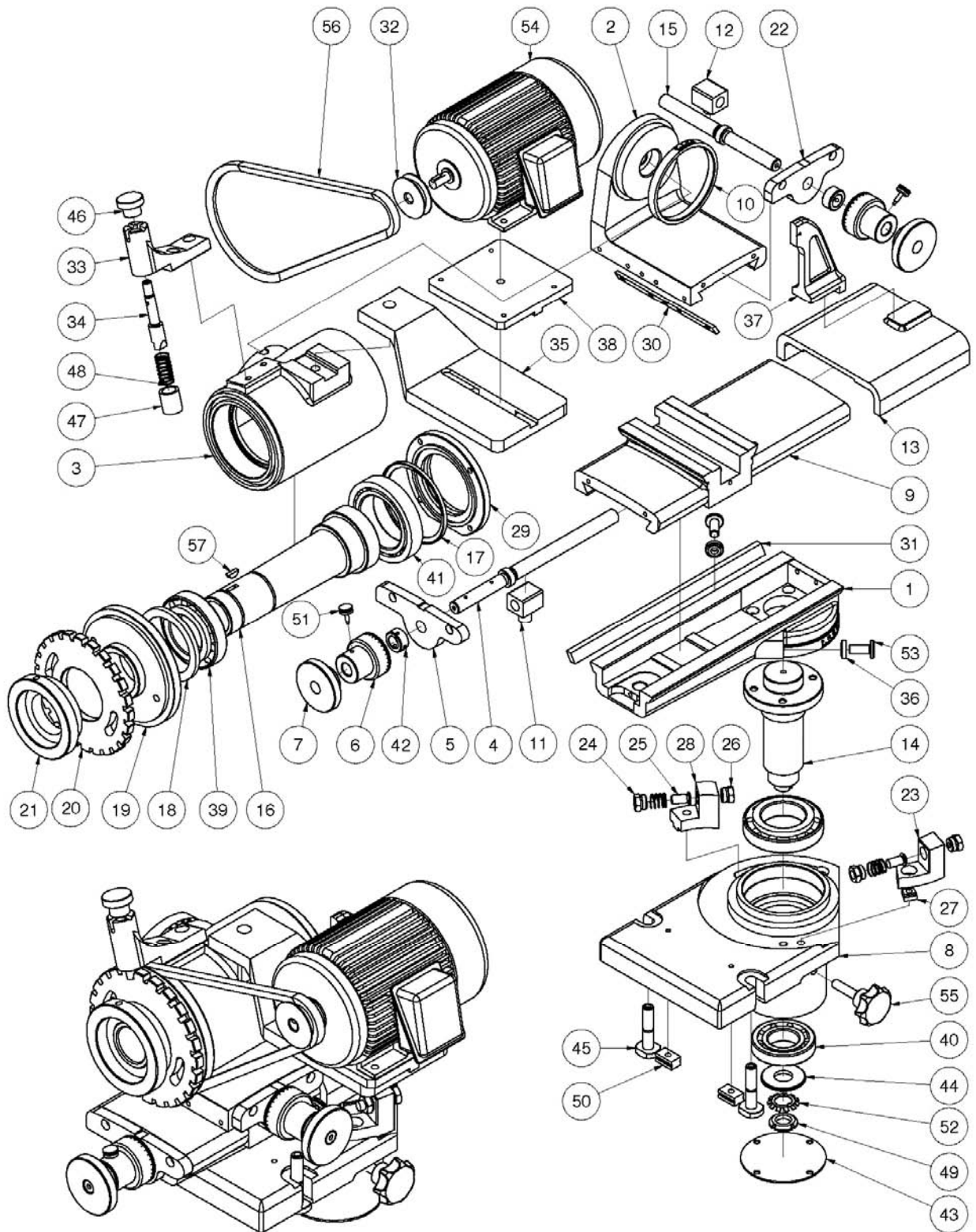
(f) Install indexing plate retention mechanism and tighten.



(g) Assembly is completed.



## Circular Arc No. 1 Drawing



## Circular Arc No. 1 List

項目	品號	品名	規格	數量
1	M110020**	Slide base		1
2	M110040**	Work-head Slide base		1
3	M110060**	Work-head		1
4	M110078**	Screw		1
5	M110080**	Screw cover		1
6	M110098**	Scale ring (SI)		2
7	M110100**	Fixing ring		2
8	M110010**	Base		1
9	M110030**	Block vertical feed		1
10	M110050**	Scale ring		1
11	M110111**	Angle Nut		1
12	M110118**	Angle Nut		1
13	M110120**	Cover		1
14	M110130**	Rotary axis		1
15	M110148**	Screw		1
16	M110151**	Work head spindle		1
17	M110160**	Bearing cover		1
18	M110170**	Bearing cover		1
19	M110180**	Spindle pulley		1
20	M110190**	Indexing plate		1
21	M110200**	Fixing nut		1
22	M110210**	Screw cover		1
23	M110220**	Stopper block		1
24	M110230**	Pin hole nuts		2
25	M110240**	Cushion pins		2
26	M110250**	Stopper Nuts		2
27	M110260**	Stopper fixed block		1
28	M110270**	Adjust stopper		1
29	M110280**	Working head bearing cap		1
30	M110290**	Down a short article		1
31	M110300**	Down a long article		1
32	M110310**	Motor pulley		1
33	M110320**	Indexing plate holder		1
34	M110330**	Positioning rod		1
35	M110360**	Motor Mount board		1
36	M110380**	Adjust positioning nut		2

37	M110390**	Centres Regulation		1
38	M110350**	Motor fixing board		1
39	GB020033	Tapered Roller Bearings	30210	2
40	GB020020	Tapered Roller Bearings	30207	1
41	GB020101	Tapered Roller Bearings	32013	1
42	M120100**	Retaining collar		2
43	M120130**	Bearing cap		1
44	M120140**	Washer		1
45	M120260**	Bolt		2
46	M170010**	Slotting head		1
47	M170020**	Bushing		1
48	M170080**	Spring		2
49	M430070**	Tighten the nut		1
50	M450030**	Bond		2
51	M451060**	Hand pole screws		2
52	GE010269	Rolling Nuts with washers (sun washers)	20	1
53		Adjustment screws		
54	M110370**	Motor		2
55	GG010078		220V/380V/50HZ/1/4HP/ Reverse	1
56		Star-shaped knob	6050-50-M10-40	
57	GD020415	V-belt	M30	1