

Installing and Configuring Delta Software

What you need: ASDA2 manual, Delta A2 Software, usb cable, extension cable, Windows laptop or computer w/cnc11 v3.09r15 or higher, Optic direct PLC program, optic direct, delta optic direct ribbon cable, fibers or wires for connection to mpu11, rtk4 or optic4.

Download links

[Delta Software](#)

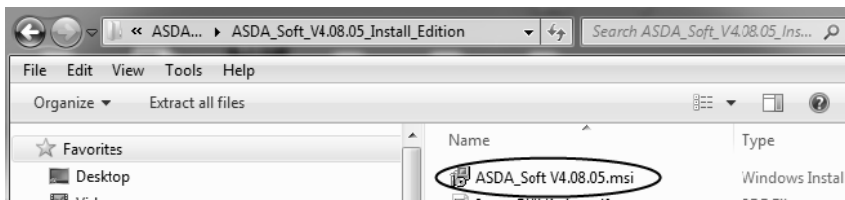
http://www.delta.com.tw/product/em/motion/motion_servo/download/software/ASDA_Soft_V4.08.05_Install_Edition.zip

[Delta A2 Manual](#)

http://www.delta.com.tw/product/em/motion/motion_servo/download/manual/DELTA_ASDA-A2_M_EN_20130315.pdf

Installing and configuring Delta Software

1. Copy zip file to the computer you will be using to connect to the drive.
2. On the computer you will be using to tune the drive, Double click the ASDA_Soft_V4.08.05_Install.zip file to open it and then double click the Msi to install.

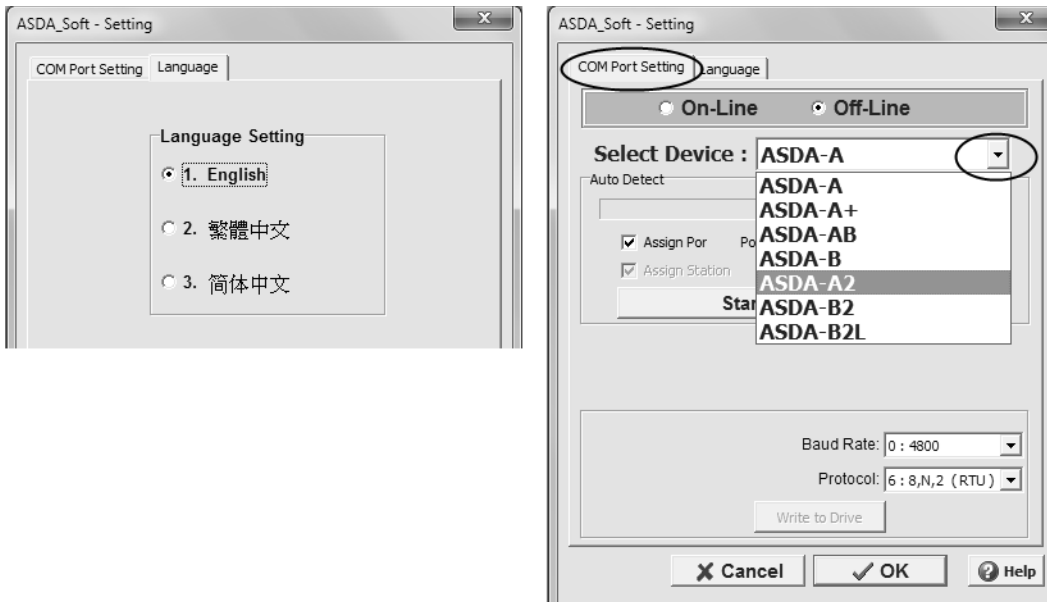


Install everything to the default locations that the program chooses for you. This will create a shortcut on your desktop.

3. Double click the ASDA shortcut on your desktop to start the Delta software. The first time you run it, you will be prompted to install usb drivers, install usb drivers, power off, power back up with usb cable disconnected.

Plug usb cable into drive and computer -Windows may indicate it is installing drivers when you reboot, let it complete before starting software.

4. Start ASDA software - you will be prompted to select a language. After you have selected a language, click on the "COM Port Setting" tab, then click on the down arrow of the dropdown box and scroll down to select ASDAA2, click ok to set drive type and language.



5. Click autodetect, to configure your com port settings. If not succesfull, try powering off and back up again. After it has autodetected, click ok. Notice that the drive has now come online.

