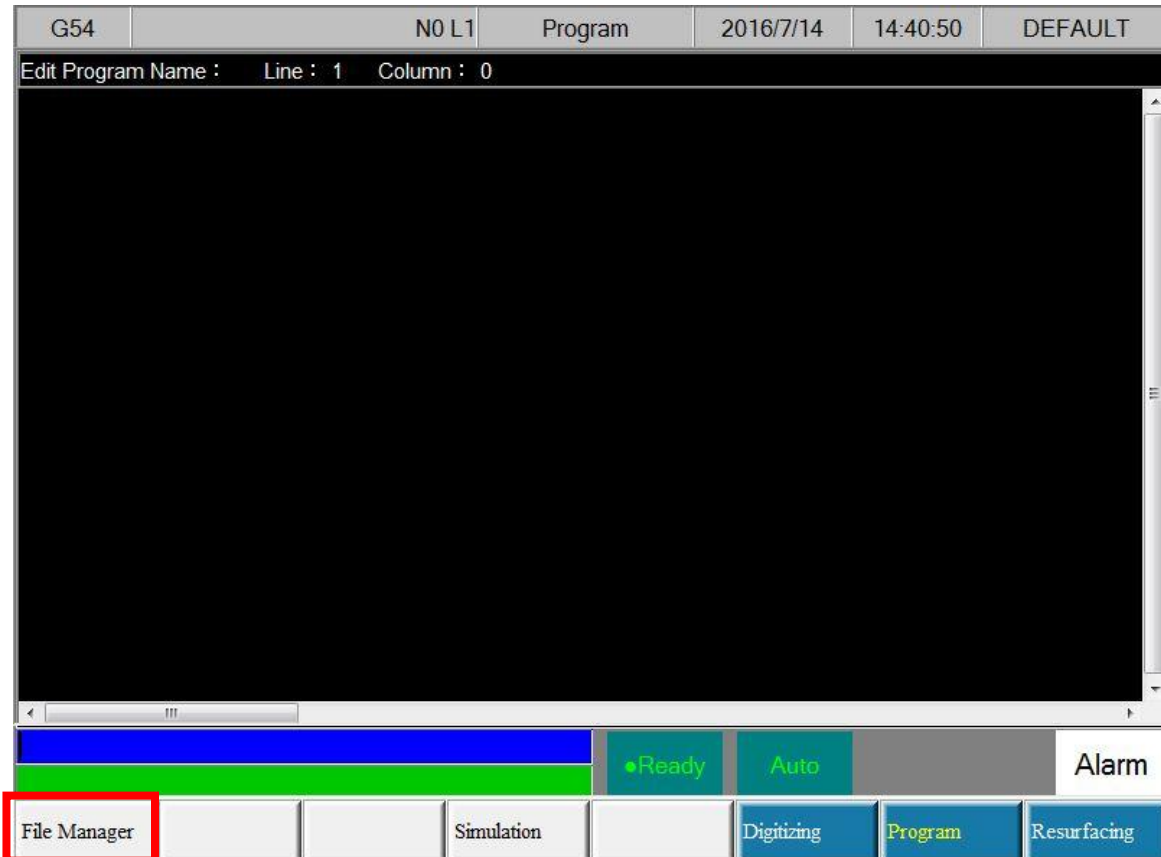


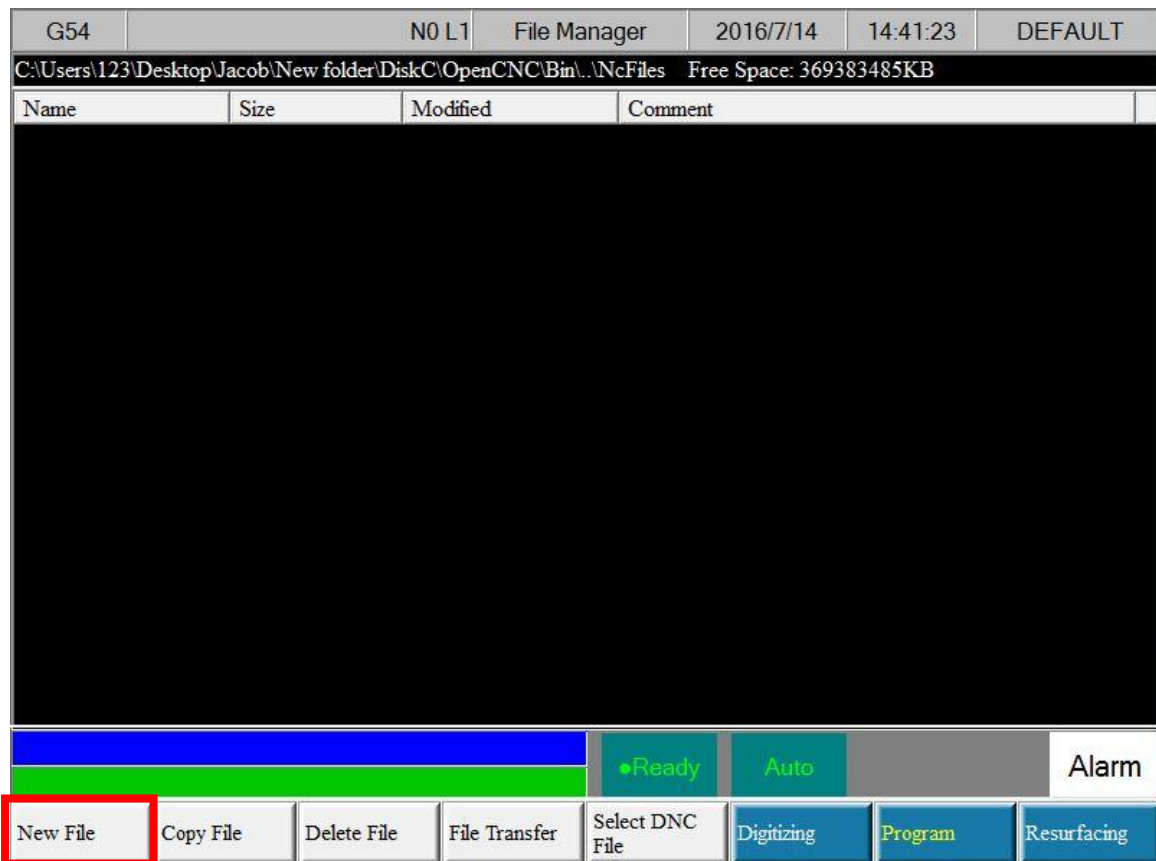
Step 1: Start at the main page and press **Programs**.



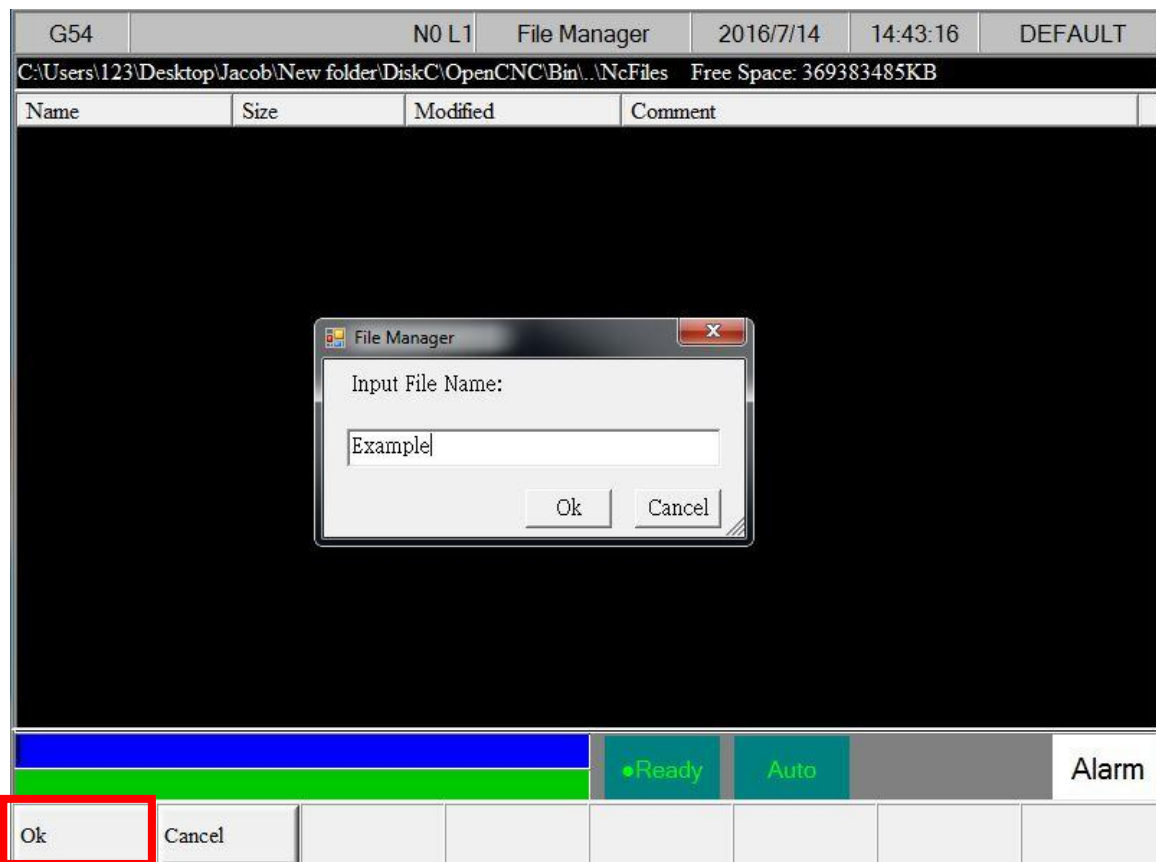
Step 2: Locate the **File Manager**.



Step 3: Create a **New File**.



Step 4: Input **File Name** and Press **OK**.



Step 5: In the file, type in (recommended) M4 S100. In this example, this is the code to set the spindle speed to 100 RPM.

Step 6: Press **Resurfacing**.

